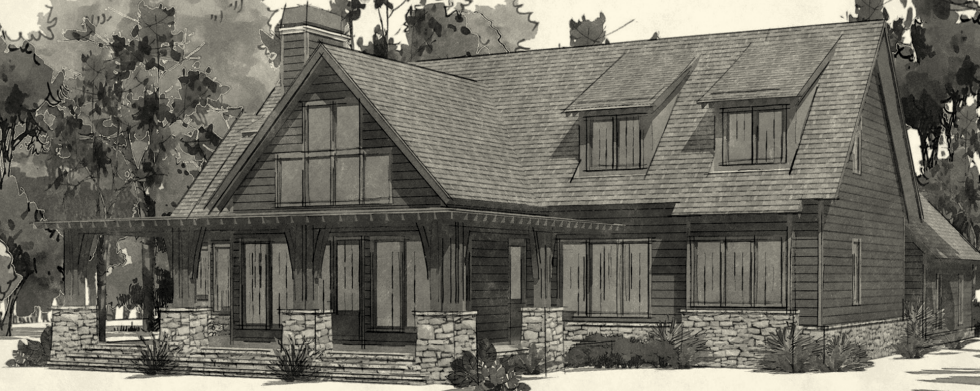


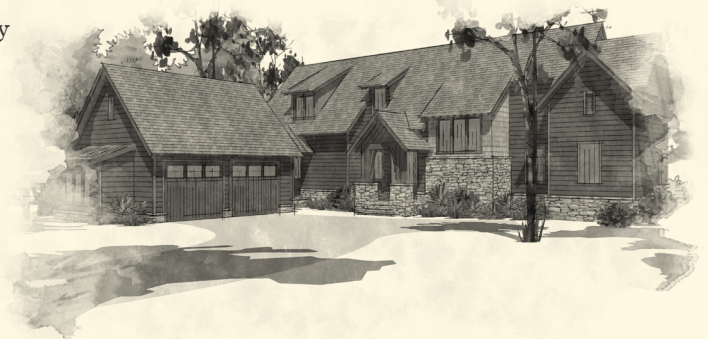


# LOGAN'S RUN



*Lakeside Elevation*

- Designer: Larry Furlong
- Four bedrooms, optional fifth bedroom suite and four and one-half bathrooms
- Main level includes vaulted entry and living with stone two-story fireplace and grand wrap-around porch.
- Stunning primary and guest suites on main with dining, fully equipped kitchen, pantry and bar
- Upper level offers two bedroom suites and an optional bedroom suite, balcony and play area
- Service porch connects double garage for easy access; optional garage suite 280 sq. ft.
- 2,634 sq. ft. conditioned space



*Street Side Elevation*

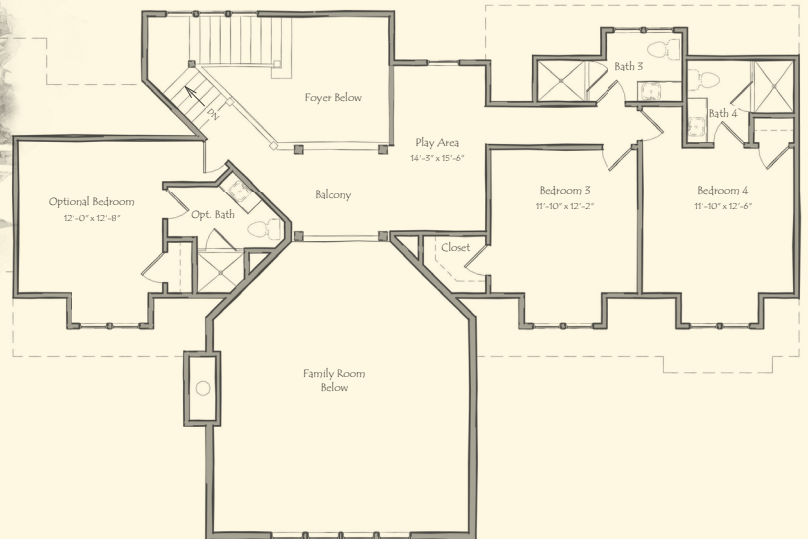
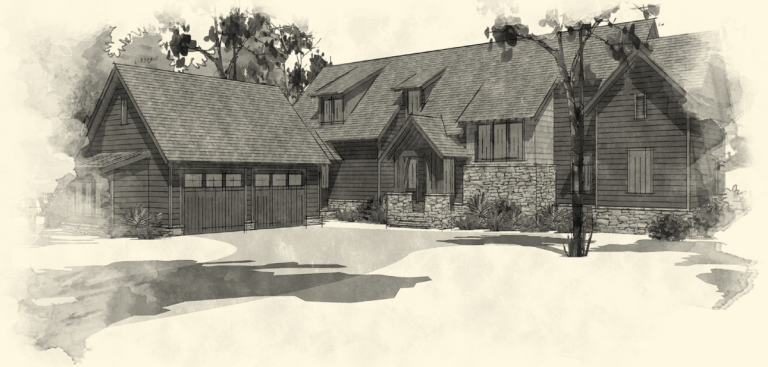
**PRICE:** With the varied size of the homes and lot selection, pricing will depend on final features and lot selection.

For additional information about Russell Lands neighborhoods, call 256.215.7011 or visit [www.RussellLands.com](http://www.RussellLands.com).

# Main Level

## LOGAN'S RUN

1,889 Heated Sq. Ft.



# Lake Level

## LOGAN'S RUN

745 Heated Sq. Ft.