



# ISLAND BLUFF



*Lakeside Elevation*

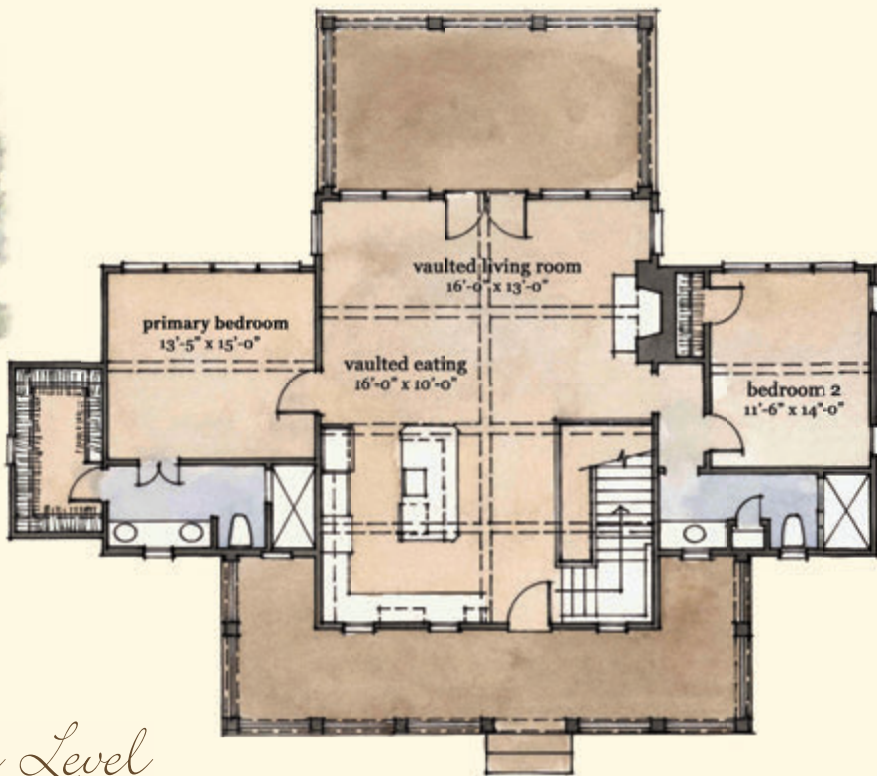
- Architect: Mitch Ginn
- Four bedrooms and four full bathrooms
- Primary bedroom and guest bedroom on main level
- Spacious kitchen-dining-living area with vaulted ceilings offering lake views
- Upscale appliance package
- Handsomely crafted stone fireplace
- Lake-level living includes two bedrooms, rec room, wet bar, and covered terrace
- Thoughtfully designed with lake-prep storage room
- 2,558 sq. ft. of conditioned space



*Street Side Elevation*

PRICE: Pricing will depend on final features and lot selection.

For additional information about Russell Lands On Lake Martin neighborhoods, call 256.215.7011 or visit [www.RussellLandsOnLakeMartin.com](http://www.RussellLandsOnLakeMartin.com).



*Main Level*

ISLAND BLUFF

1,408 Heated Sq. Ft.



*Lake Level*

ISLAND BLUFF

1,150 Heated Sq. Ft.



# DOUBLE ROCK



*Lakeside Elevation*

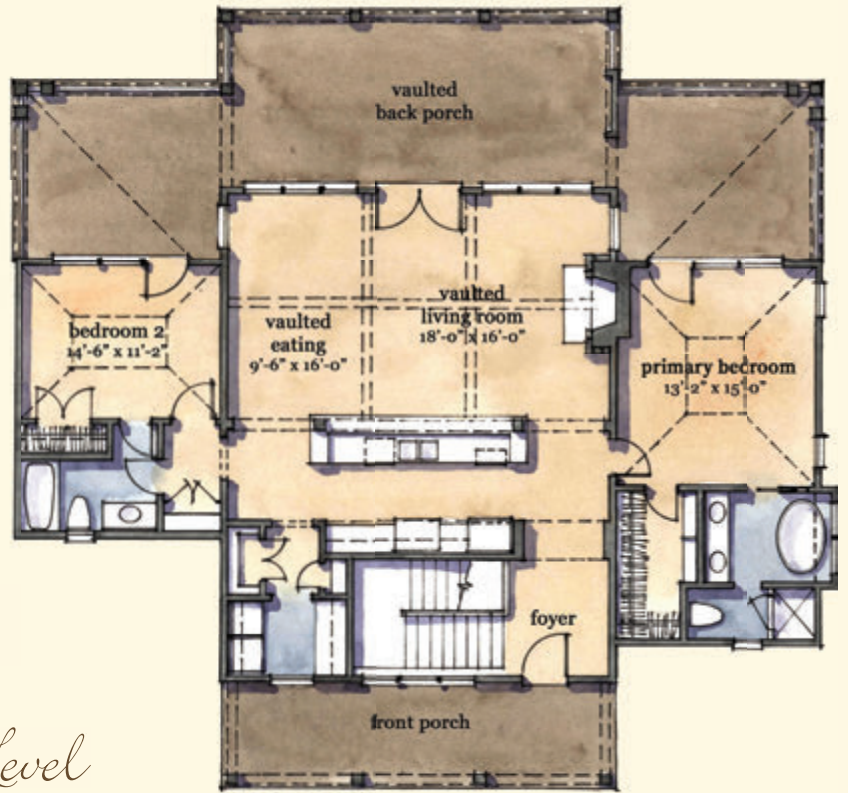
- Architect: Mitch Ginn
- Four bedrooms and four full bathrooms
- Primary bedroom and guest bedroom on main level with access to covered patio
- Handsomely crafted stone fireplace with vaulted ceilings
- Spacious kitchen-dining-living area with wonderful lake views
- Upscale appliance package
- Wonderful lake-level living with two bedrooms, family room, wet bar, and covered patio
- Expansive covered wrap-around porch
- Thoughtfully designed with lake-prep storage room
- 2,928 sq. ft. of conditioned space



*Street Side Elevation*

PRICE: Pricing will depend on final features and lot selection.

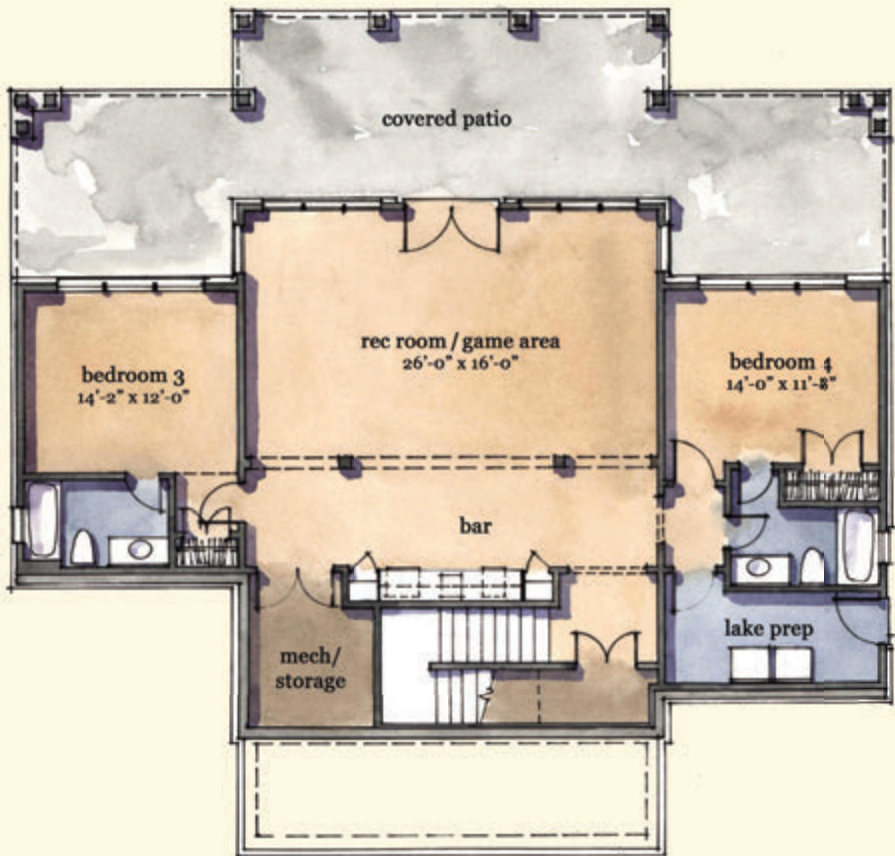
For additional information about Russell Lands On Lake Martin neighborhoods, call 256.215.7011 or visit [www.RussellLandsOnLakeMartin.com](http://www.RussellLandsOnLakeMartin.com).



*Main Level*

**DOUBLE ROCK**

1,557 Heated Sq. Ft.



*Lake Level*

**DOUBLE ROCK**

1,371 Heated Sq. Ft.



# HARBOR VIEW



*Lakeside Elevation*

- Architect: Mitch Ginn
- Four bedrooms and four and one-half bathrooms
- Primary suite and guest suite on main level
- Open living-dining area providing lake views
- Upscale appliance package
- Handsomely crafted stone fireplace
- Lake level offers two guest suites, rec room, wet bar, and covered patio
- Thoughtfully designed with lake-prep storage room
- 3,423 sq. ft. of conditioned space



*Street Side Elevation*

PRICE: Pricing will depend on final features and lot selection.

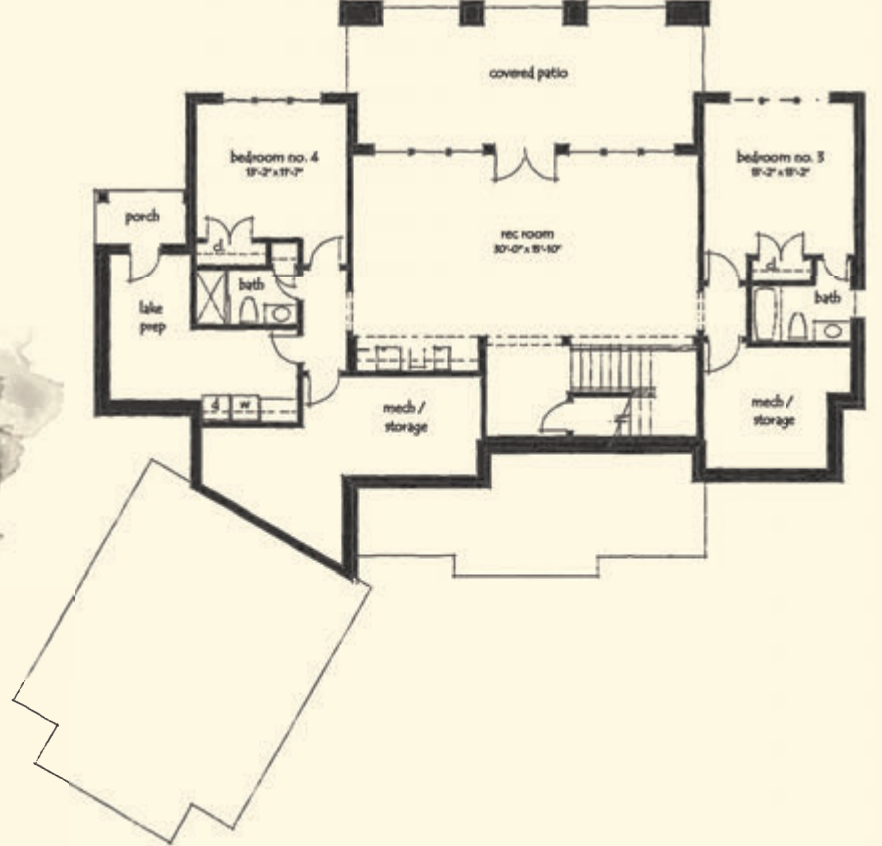
For additional information about Russell Lands On Lake Martin neighborhoods, call 256.215.7011 or visit [www.RussellLandsOnLakeMartin.com](http://www.RussellLandsOnLakeMartin.com).



*Main Level*

**HARBOR VIEW**

1,918 Heated Sq. Ft.



*Lake Level*

**HARBOR VIEW**

1,505 Heated Sq. Ft.



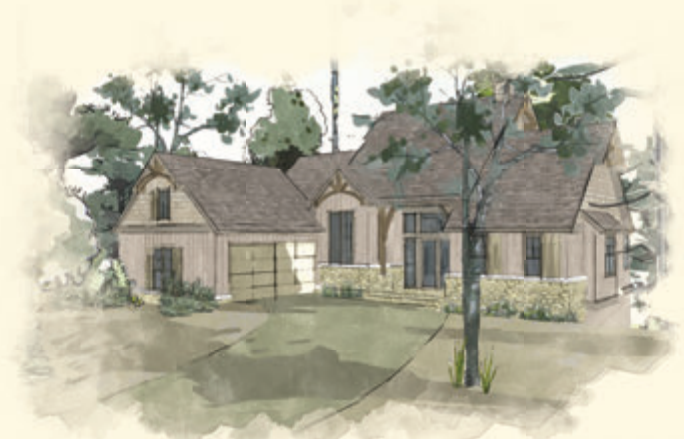
# RIVERSIDE COTTAGE



*Lakeside Elevation*

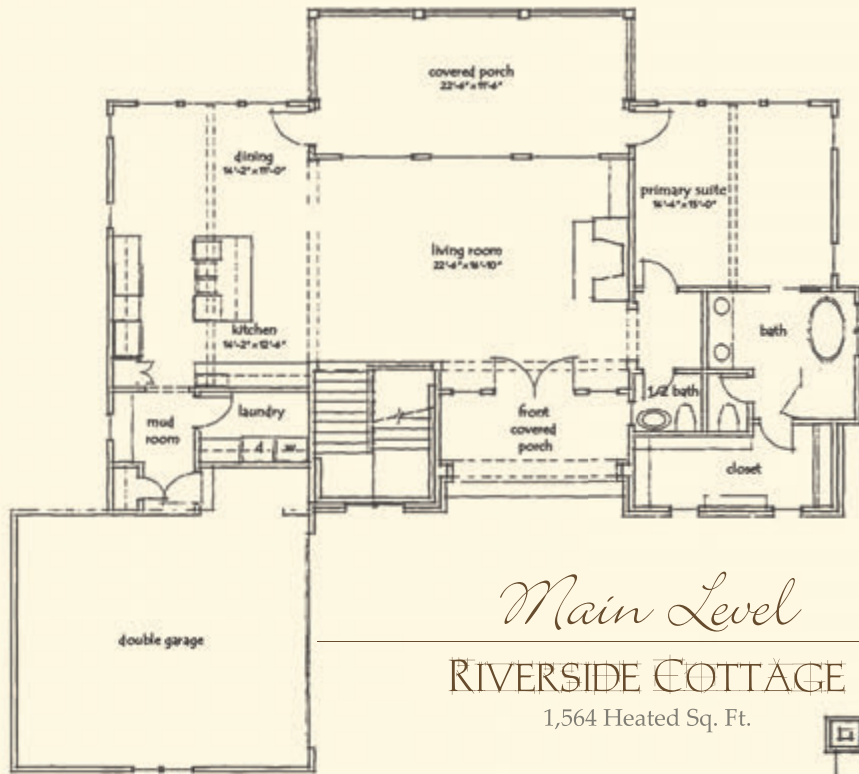
- Architect: Mitch Ginn
- Four bedrooms and four and one-half bathrooms
- Primary suite on main level
- Open kitchen-dining-living area with vaulted ceilings and sliding doors to covered deck
- Upscale appliance package
- Handsomely crafted stone fireplace
- Lake level offers three guest suites, rec room, and wet bar and opens to the covered patio
- Thoughtfully designed with lake-prep storage room
- Attached two-car garage
- 2,934 sq. ft. of conditioned space

PRICE: Pricing will depend on final features and lot selection.



*Street Side Elevation*

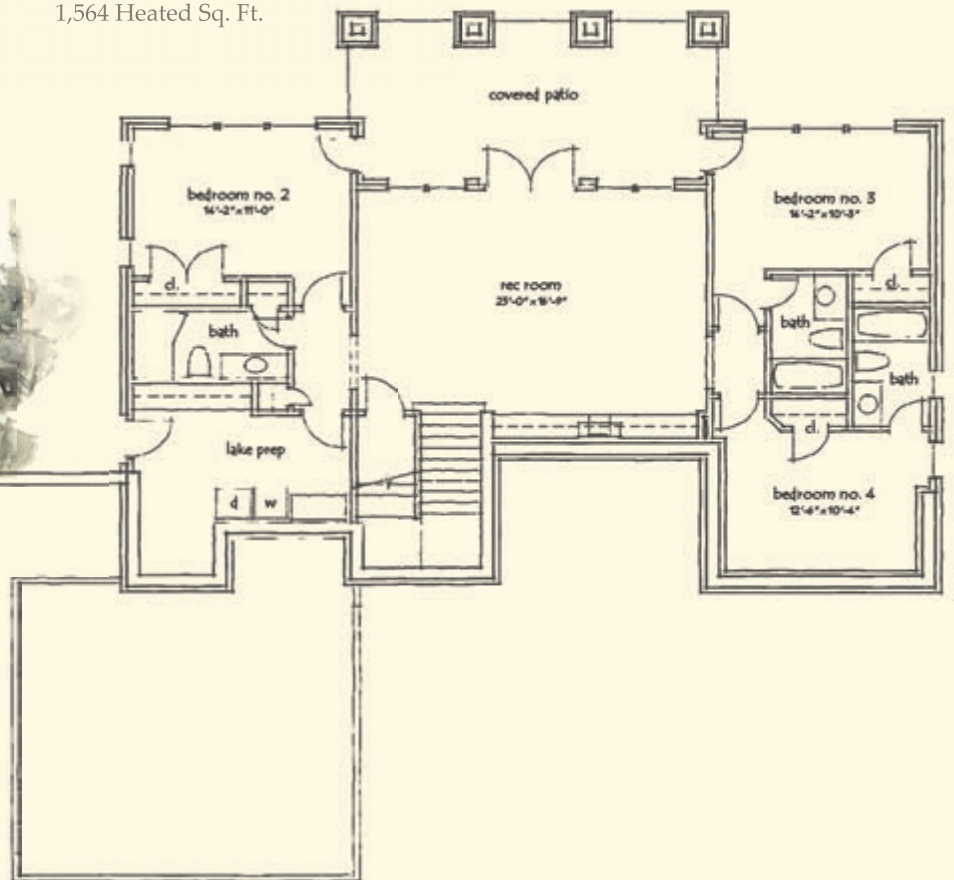
For additional information about Russell Lands On Lake Martin neighborhoods, call 256.215.7011 or visit [www.RussellLandsOnLakeMartin.com](http://www.RussellLandsOnLakeMartin.com).



*Main Level*

**RIVERSIDE COTTAGE**

1,564 Heated Sq. Ft.



*Lake Level*

**RIVERSIDE COTTAGE**

1,370 Heated Sq. Ft.





# THE BROOKE ANN



*Lakeside Elevation*

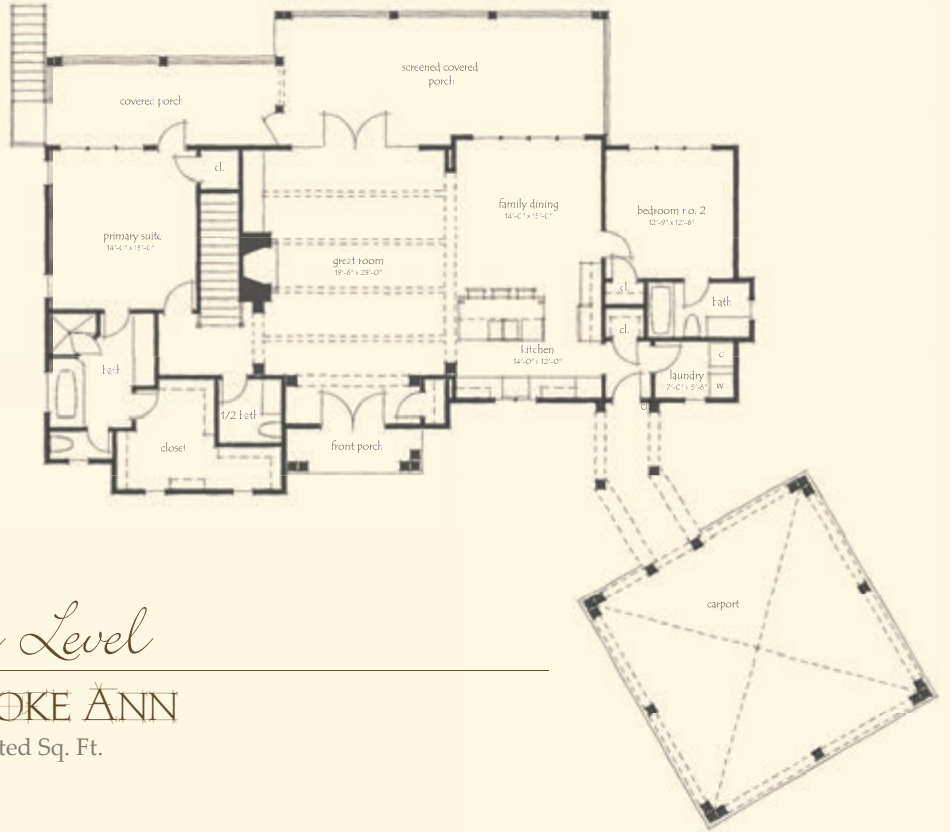
- Designer: Chuck Frusterio
- Four bedrooms, optional fifth bedroom/game room and four and one-half bathrooms
- Great room with vaulted ceiling featuring a natural stone fireplace
- Upscale appliance package
- Primary suite and guest suite on main level
- Second great room on lake level with built-in bar
- Generous lake-prep and toy storage room with potential for golf cart storage
- Expansive covered deck
- Detached two-car garage
- 3,434 sq. ft. of conditioned space



*Street Side Elevation*

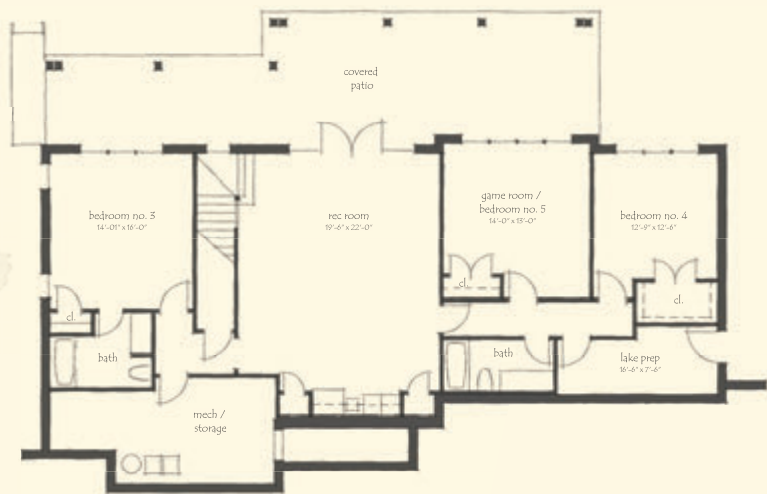
PRICE: Pricing will depend on final features and lot selection.

For additional information about Russell Lands On Lake Martin neighborhoods, call 256.215.7011 or visit [www.RussellLandsOnLakeMartin.com](http://www.RussellLandsOnLakeMartin.com).



*Main Level*

**THE BROOKE ANN**  
1,842 Heated Sq. Ft.



*Lake Level*

**THE BROOKE ANN**  
1,592 Heated Sq. Ft.



# CREOLE COTTAGE



*Lakeside Elevation*

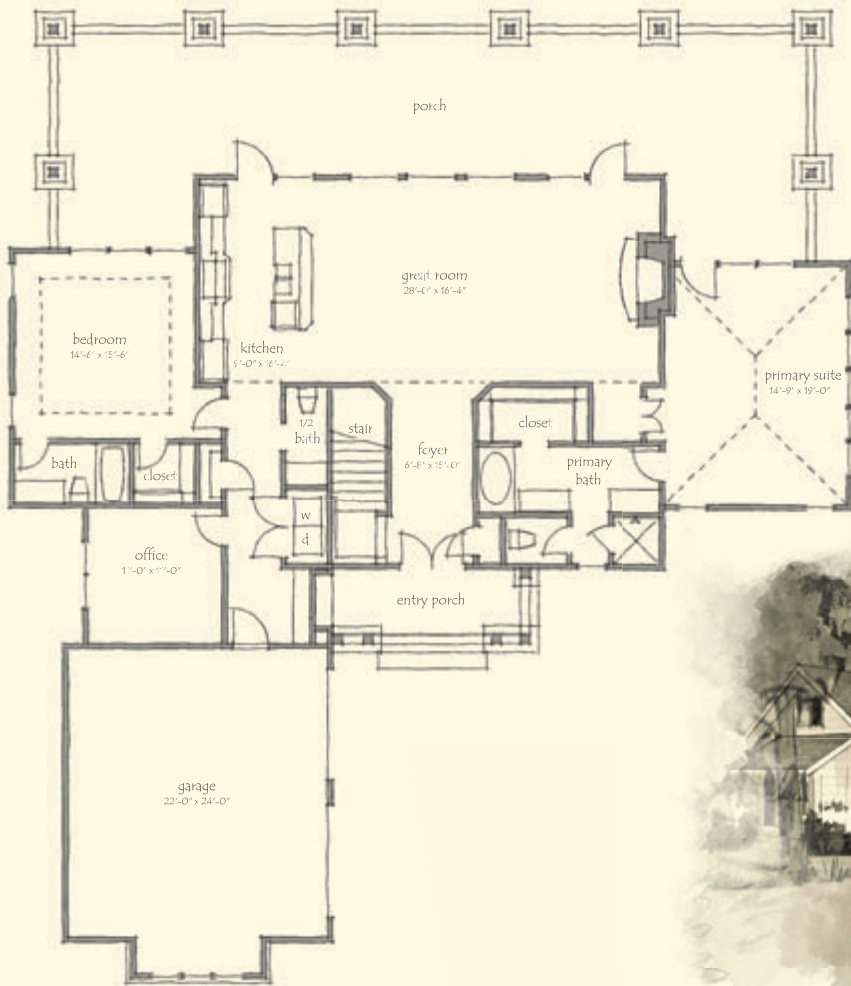
- Architect: Mitch Ginn
- Four bedrooms, four full bathrooms and two half bathrooms
- Primary suite and guest suite on main level
- Open kitchen-dining-living area providing wonderful lake views
- Handsomely crafted stone fireplace and vaulted ceiling with wood beams
- Upscale appliance package
- Great covered porch off living area and primary suite
- Two-car garage
- Additional features include office and mudroom
- Laundry on both levels
- Wonderful lake-level living with two bedrooms, family room, optional media room, and covered terrace
- Thoughtfully designed with lake-prep storage room and inside lake-level storage
- 3,354 sq. ft. of conditioned space



*Street Side Elevation*

PRICE: Pricing will depend on final features and lot selection.

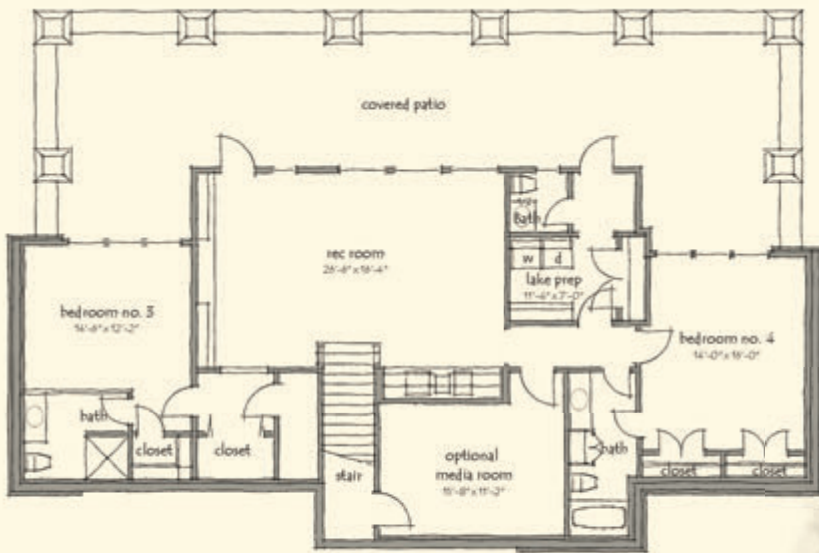
For additional information about Russell Lands On Lake Martin neighborhoods, call 256.215.7011 or visit [www.RussellLandsOnLakeMartin.com](http://www.RussellLandsOnLakeMartin.com).



## Main Level

### CREOLE COTTAGE

1,934 Heated Sq. Ft.



## Lake Level

### CREOLE COTTAGE

1,420 Heated Sq. Ft., Optional media room: 203 sq. ft.,





# LAKEVIEW LODGE



*Lakeside Elevation*

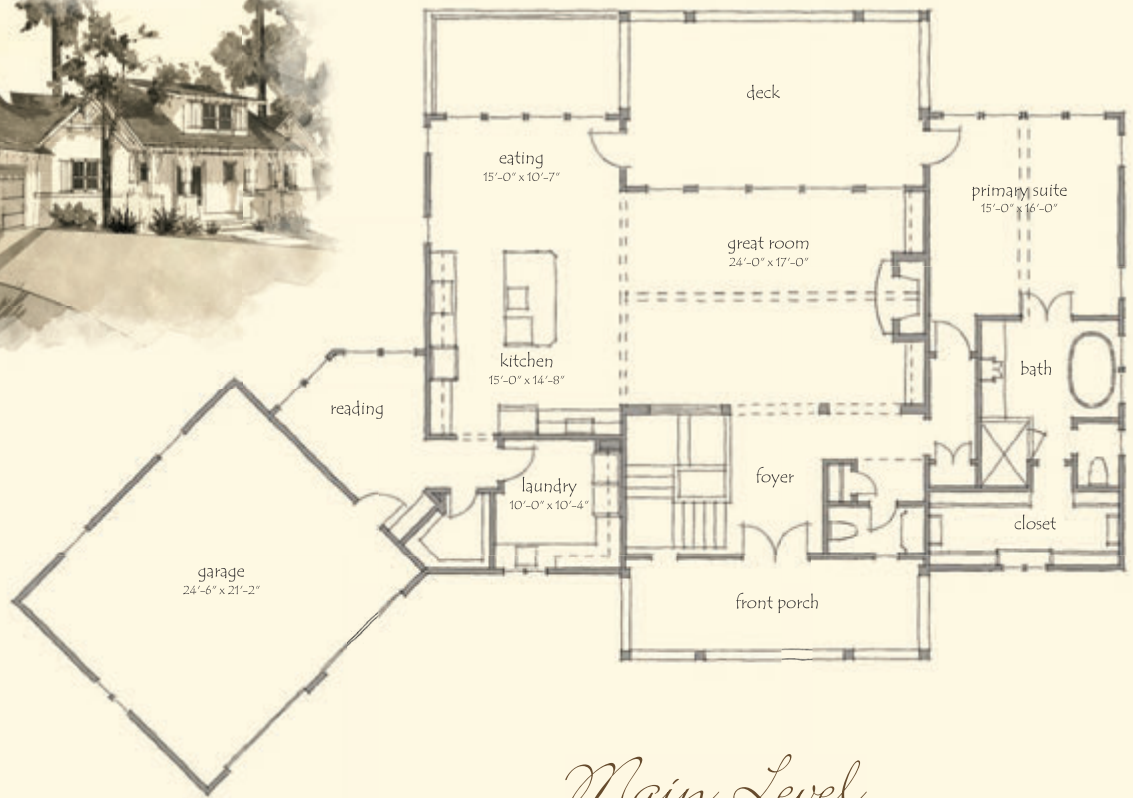
- Architect: Mitch Ginn
- Four bedrooms and four and one-half bathrooms
- Primary suite on main level
- Open kitchen-dining-living area providing wonderful lake views
- Additional features include office and oversized laundry
- Handsomely crafted stone fireplace with vaulted ceilings
- Upscale appliance package
- Great covered porch off living area and primary suite
- Wonderful lake-level living with three bedrooms, family room, bar and covered terrace
- Two-car garage linked to mudroom
- Thoughtfully designed with lake-prep storage room and inside lake-level storage
- 3,962 sq. ft. of conditioned space



*Street Side Elevation*

PRICE: Pricing will depend on final features and lot selection.

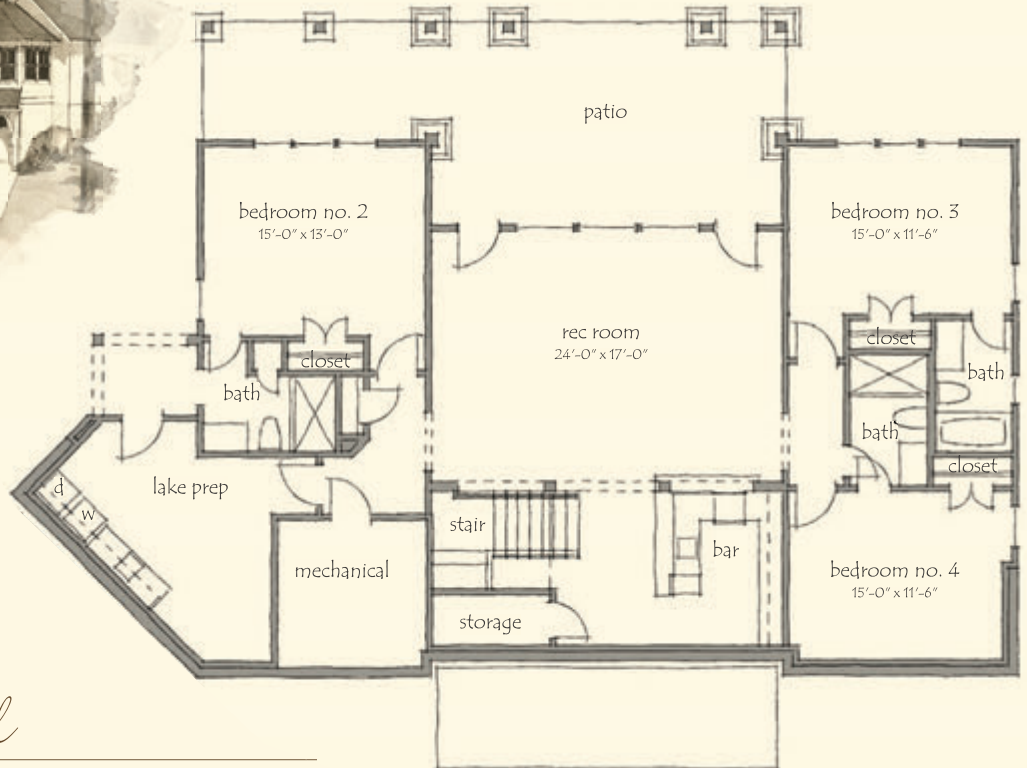
For additional information about Russell Lands On Lake Martin neighborhoods, call 256.215.7011 or visit [www.RussellLandsOnLakeMartin.com](http://www.RussellLandsOnLakeMartin.com).



*Main Level*

**LAKEVIEW LODGE**

2,039 Heated Sq. Ft.



*Lake Level*

**LAKEVIEW LODGE**

1,923 Heated Sq. Ft.



# DOUBLE MAIN



*Lakeside Elevation*

- Primary suite and guest suite on main level
- Open kitchen-dining-living area providing wonderful lake views
- Upscale appliance package
- Guest powder room off living area
- Laundry on both levels
- Handsomely crafted stone fireplace with vaulted ceilings
- Detached two-car garage
- 3,541 - 3,678 sq. ft. of conditioned space

PRICE: Pricing will depend on final features and lot selection.

## LAKE LEVEL OPTION A:

- Wonderful lake-level living with two bedrooms, two and one-half bathrooms, family room and covered terrace
- Access to covered porch from both guest suites
- Thoughtfully designed with lake-prep storage room and inside lake-level storage

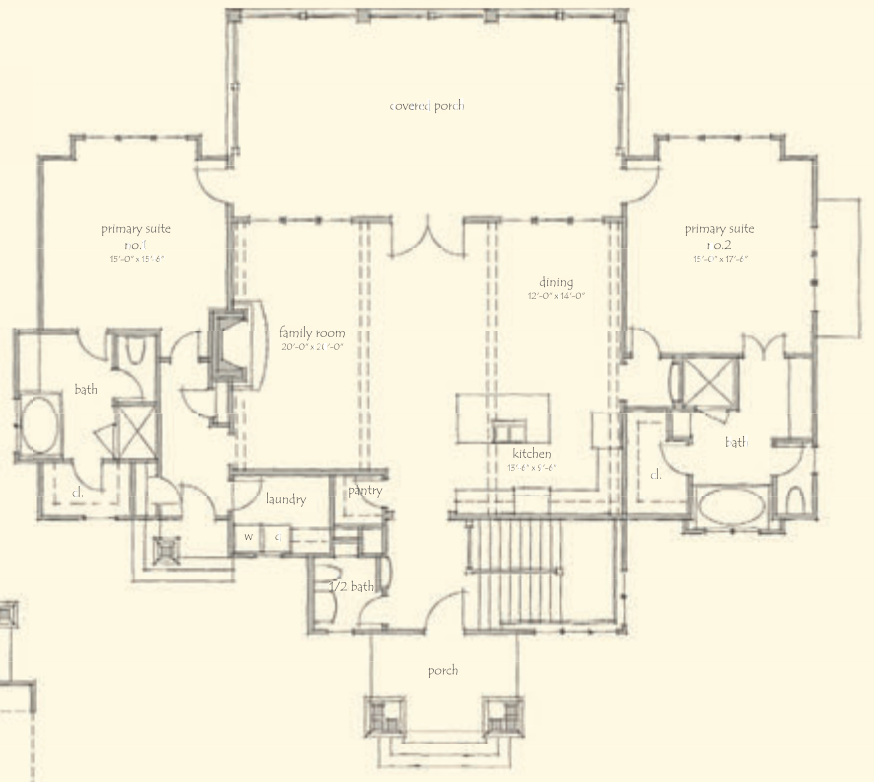
## LAKE LEVEL OPTION B:

- Wonderful lake-level living with three bedrooms, three bathrooms, family room and covered terrace
- Access to covered porch from two guest suites
- Thoughtfully designed with lake-prep storage room and inside lake-level storage



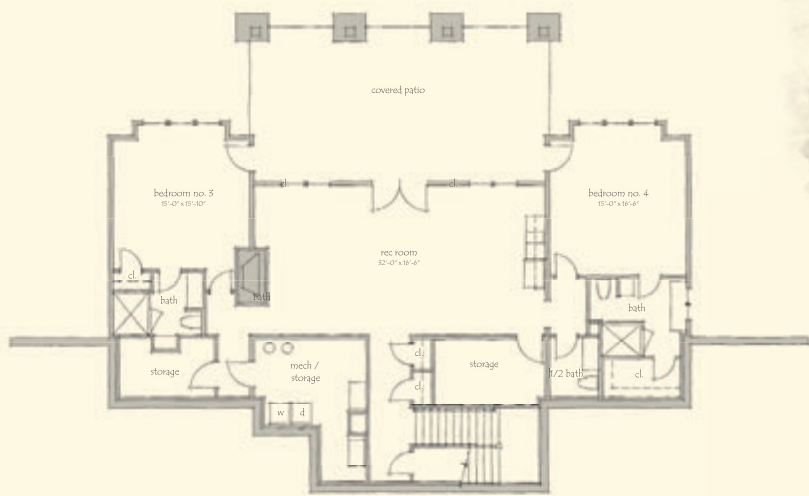
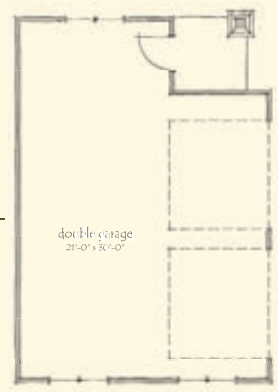
*Street Side Elevation*

For additional information about Russell Lands On Lake Martin neighborhoods, call 256.215.7011 or visit [www.RussellLandsOnLakeMartin.com](http://www.RussellLandsOnLakeMartin.com).



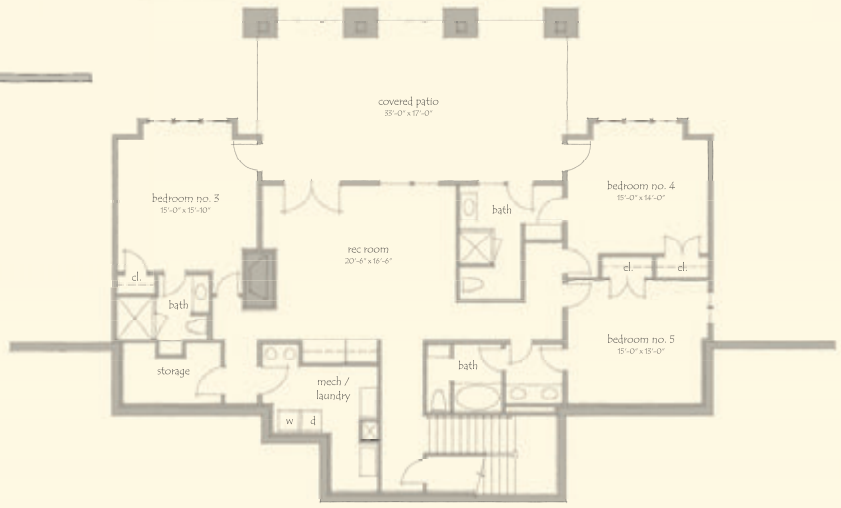
*Main Level*

**DOUBLE MAIN**  
2,073 Heated Sq. Ft.



*Lake Level: Option A*

**DOUBLE MAIN**  
1,468 Heated Sq. Ft.



*Lake Level: Option B*

**DOUBLE MAIN**  
1,605 Heated Sq. Ft.





# CLEARVIEW COTTAGE



*Lakeside Elevation*

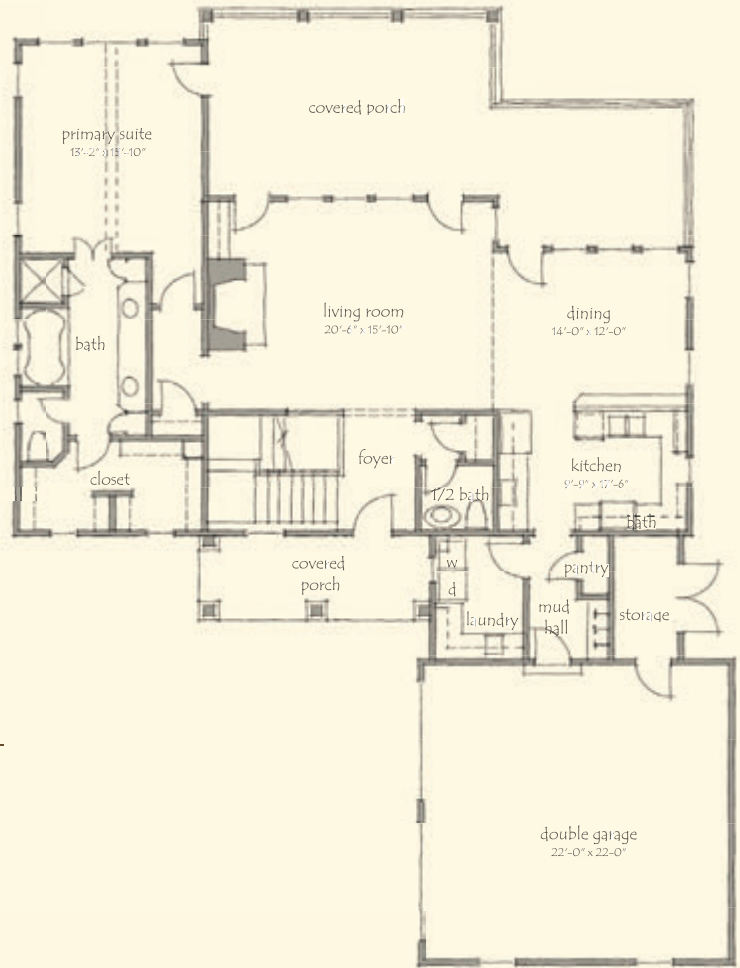
- Architect: Mitch Ginn
- Four bedrooms and four and one-half bathrooms
- Open kitchen-dining-living area providing wonderful lake views
- Handsomely crafted stone fireplace with vaulted ceilings
- Upscale appliance package
- Cooking porch off kitchen area
- Great covered porch off living area and primary suite
- Second great room on lake level with built-in bar
- Three bedrooms on lake level
- Two-car garage linked to mudroom
- Generous lake-prep and toy storage room
- 2,892 sq. ft. of conditioned space



*Street Side Elevation*

PRICE: Pricing will depend on final features and lot selection.

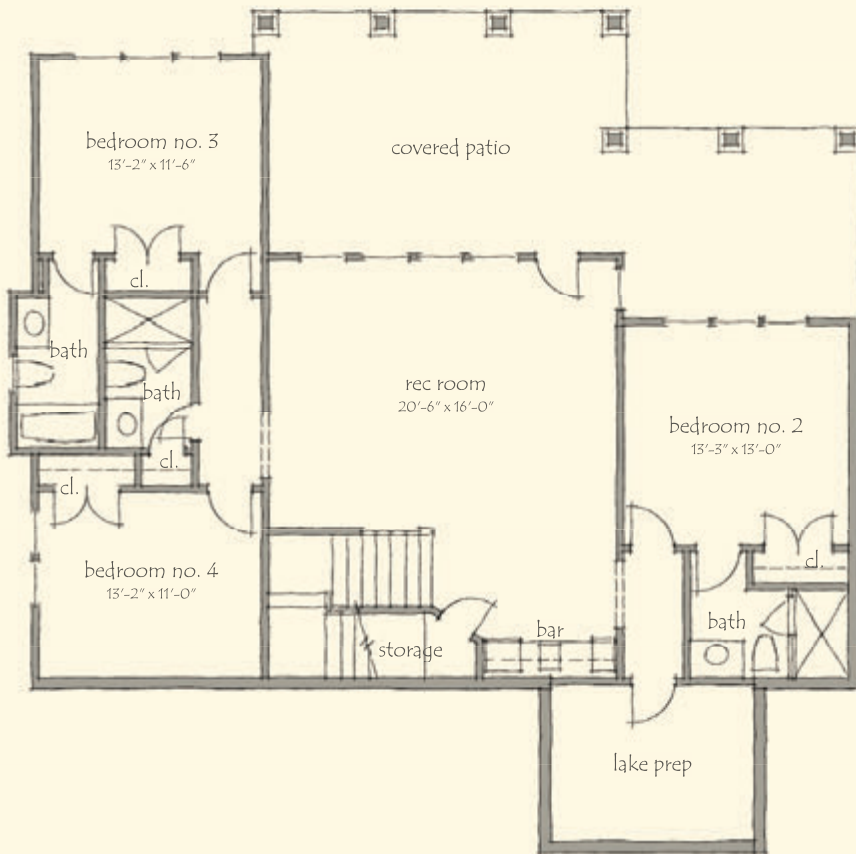
For additional information about Russell Lands On Lake Martin neighborhoods, call 256.215.7011 or visit [www.RussellLandsOnLakeMartin.com](http://www.RussellLandsOnLakeMartin.com).



*Main Level*

**CLEARVIEW COTTAGE**

1,515 Heated Sq. Ft.



*Lake Level*

**CLEARVIEW COTTAGE**

1,377 Heated Sq. Ft.



# CLASSIC COTTAGE



*Lakeside Elevation*

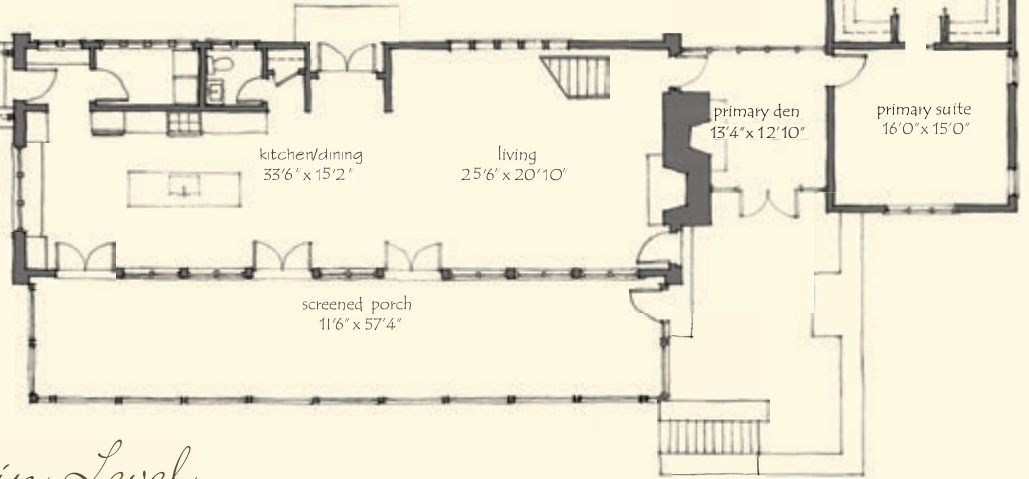
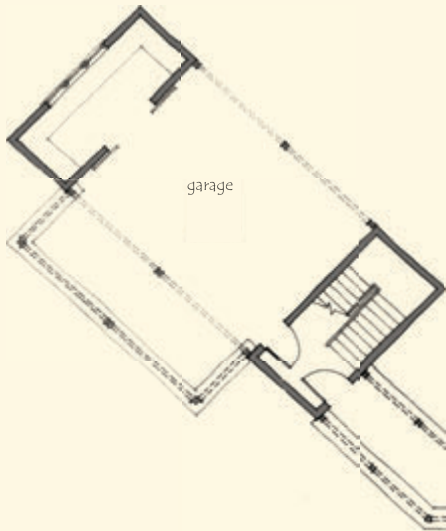
- Architect: Alex Krumdieck
- Five bedrooms and four and one-half bathrooms
- Open kitchen-dining-living area provides wonderful lake views
- Primary suite on main level includes cozy den with screened porch access
- Upstairs contains three bedrooms and two full bathrooms
- Breezeway to double garage with private guest suite above
- 3,950 sq. ft. of conditioned space
- 1,306 sq. ft. of porches and decks



*Street Side Elevation*

PRICE: Pricing will depend on final features and lot selection.

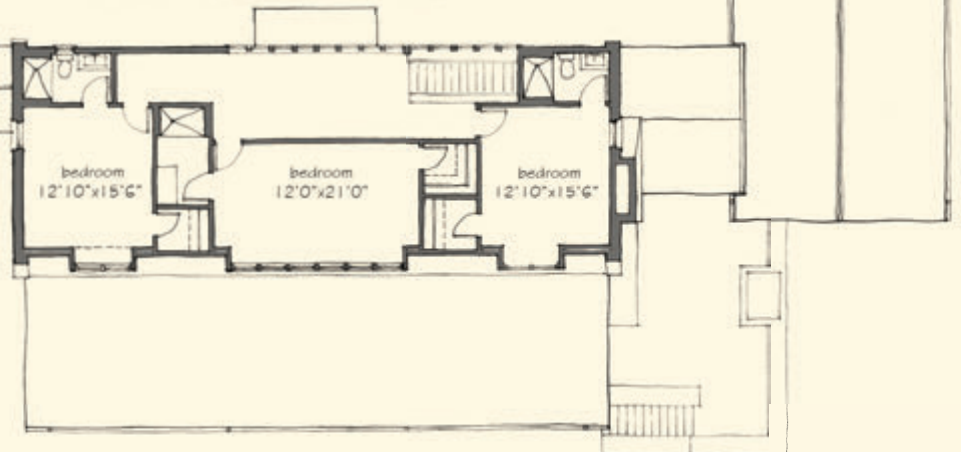
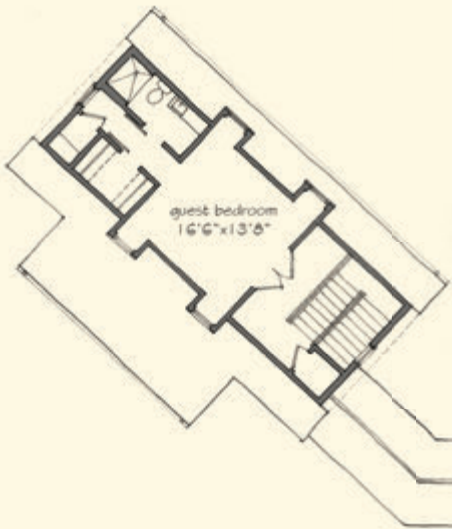
For additional information about Russell Lands On Lake Martin neighborhoods, call 256.215.7011 or visit [www.RussellLandsOnLakeMartin.com](http://www.RussellLandsOnLakeMartin.com).



*Main Level*

CLASSIC COTTAGE

2,670 Heated Sq. Ft.



*Upper Level*

CLASSIC COTTAGE

1,280 Heated Sq. Ft.



# BREAKWATER



*Lakeside Elevation*

- Designer: David Smelcer
- Five bedrooms, four full bathrooms, and one powder room
- Generous kitchen-dining-living open floor plan with wood beams and stone fireplace
- Primary suite and guest suite on main level
- Lake level offers three bedrooms, two bathrooms, rec room, bunk room, and lake-prep room
- Generous covered patio on lake level
- Laundry on main level
- Two-car attached garage
- 3,825 sq. ft. of conditioned space on two levels



*Street Side Elevation*

PRICE: Pricing will depend on final features and lot selection.

For additional information about Russell Lands On Lake Martin neighborhoods, call 256.215.7011 or visit [www.RussellLandsOnLakeMartin.com](http://www.RussellLandsOnLakeMartin.com).

# Main Level

## BREAKWATER

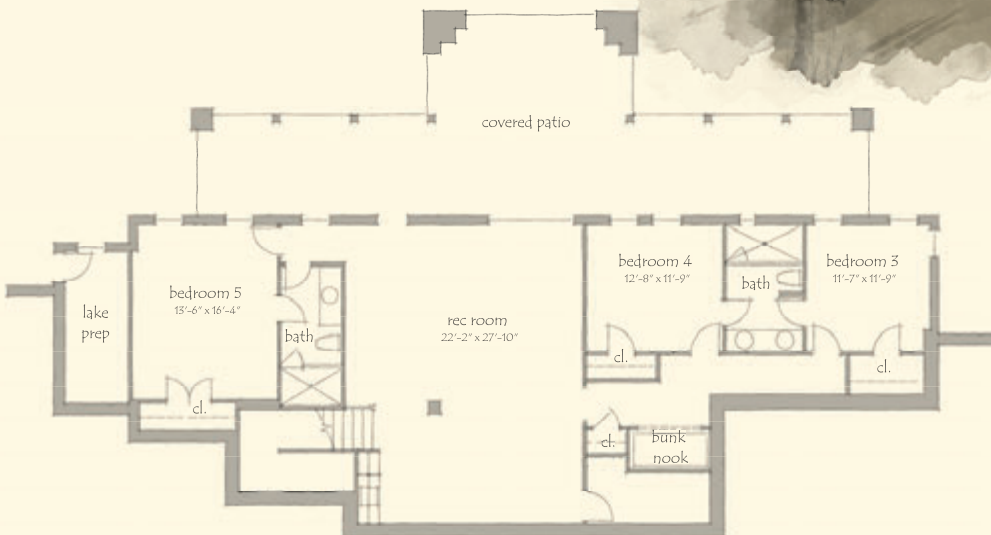
2,157 Heated Sq. Ft.



# Lake Level

## BREAKWATER

1,668 Heated Sq. Ft.





# FAIRWINDS



*Lakeside Elevation*

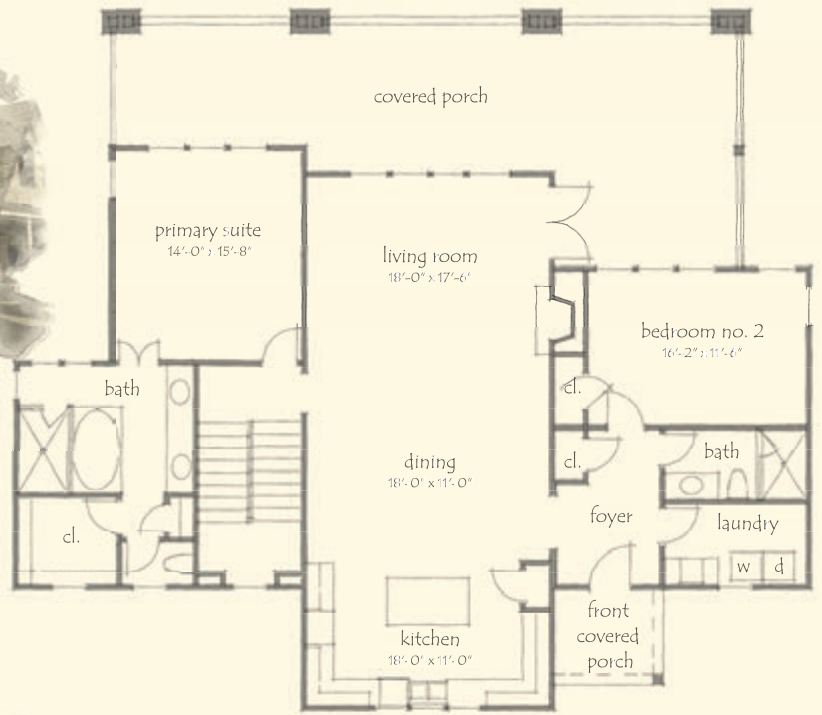
- Designer: David Smelcer
- Primary suite on main level with access to covered patio and sun porch
- Five bedrooms, five full bathrooms and two fireplaces
- Expansive open kitchen-dining-living area with fabulous lake views
- Spacious covered porch on main level
- Primary suite and guest suite on main level
- Lake level offers two more guest suites, rec room, kitchenette, and lake-prep room
- Upstairs loft area offers another guest suite with bathroom and bonus room
- Two-car detached garage
- 4,043 sq. ft. of conditioned space on three levels



*Street Side Elevation*

PRICE: Pricing will depend on final features and lot selection.

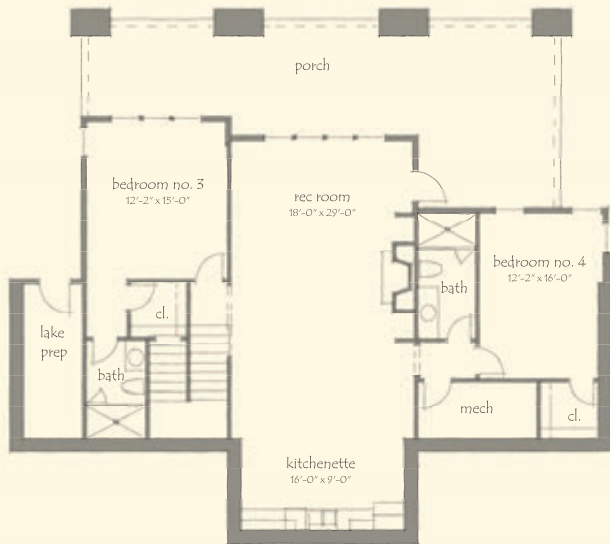
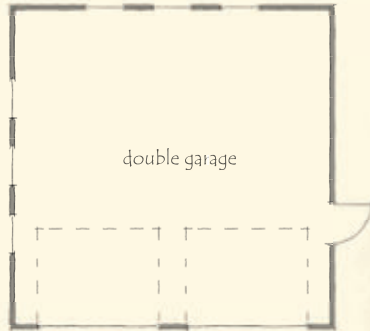
For additional information about Russell Lands On Lake Martin neighborhoods, call 256.215.7011 or visit [www.RussellLandsOnLakeMartin.com](http://www.RussellLandsOnLakeMartin.com).



*Main Level*

**FAIRWINDS**

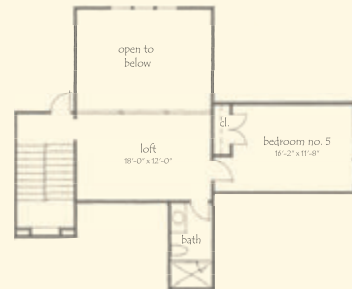
1,795 Heated Sq. Ft.



*Lake Level*

**FAIRWINDS**

1,673 Heated Sq. Ft.



*Third Level*

**FAIRWINDS**

575 Heated Sq. Ft.





# DIAMOND VIEW



*Lakeside Elevation*

- Designer: Larry Furlong
- Four bedrooms, four full bathrooms and two half bathrooms
- Large open living room with stone fireplace and spectacular views
- Kitchen overlooks living room and has dining area with water views
- Spacious primary suite on main level with access to wrap-around covered porch
- Second bedroom on main level with its own full bathroom
- Lake level offers second living room with wet bar, two bedrooms, two bathrooms and a half bath
- Generous lake-prep room, large mechanical storage with optional wine or safe room
- Detached garage with covered walkway
- 3,668 sq. ft. conditioned space on two levels



*Street Side Elevation*

PRICE: Pricing will depend on final features and lot selection.

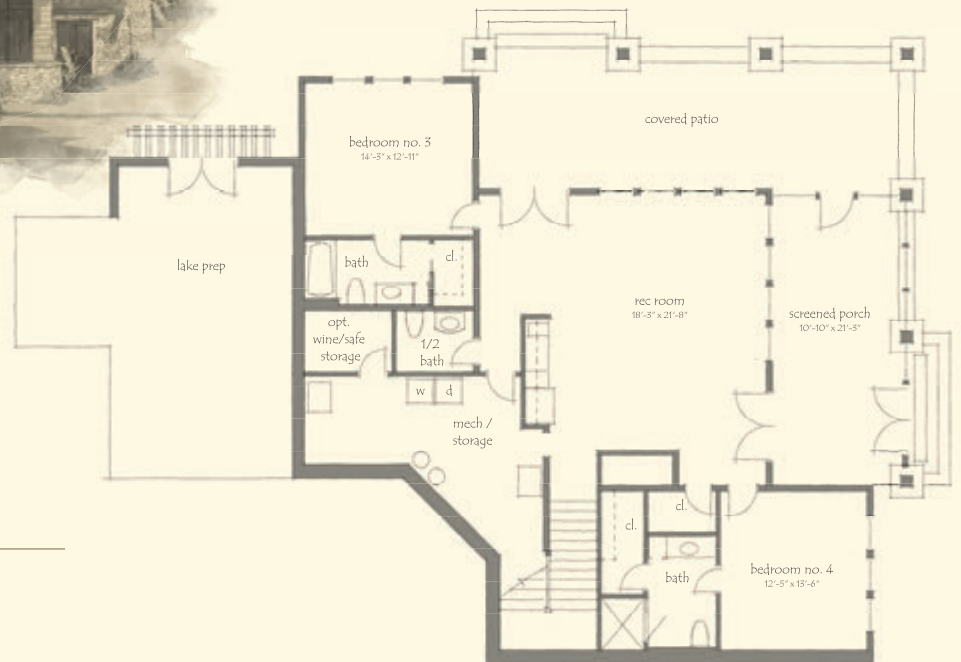
For additional information about Russell Lands On Lake Martin neighborhoods, call 256.215.7011 or visit [www.RussellLandsOnLakeMartin.com](http://www.RussellLandsOnLakeMartin.com).



*Main Level*

**DIAMOND VIEW**

2,435 Heated Sq. Ft.



*Lake Level*

**DIAMOND VIEW**

1,233 Heated Sq. Ft.



# CAMBRIA



*Lakeside Elevation*

- Designer: Larry Furlong
- Four bedrooms, optional fifth bedroom/den and four full and two half bathrooms
- Vaulted entry and open kitchen-dining-living area providing fabulous lake views
- Primary and guest suites on main level with expansive covered porches
- Upstairs contains two guest suites and second family room with overflow bunks
- Breezeway to double garage with private future bedroom suite and den space above
- 3,597 sq. ft. conditioned space; optional garage suite: 492 sq. ft.



*Street Side Elevation*

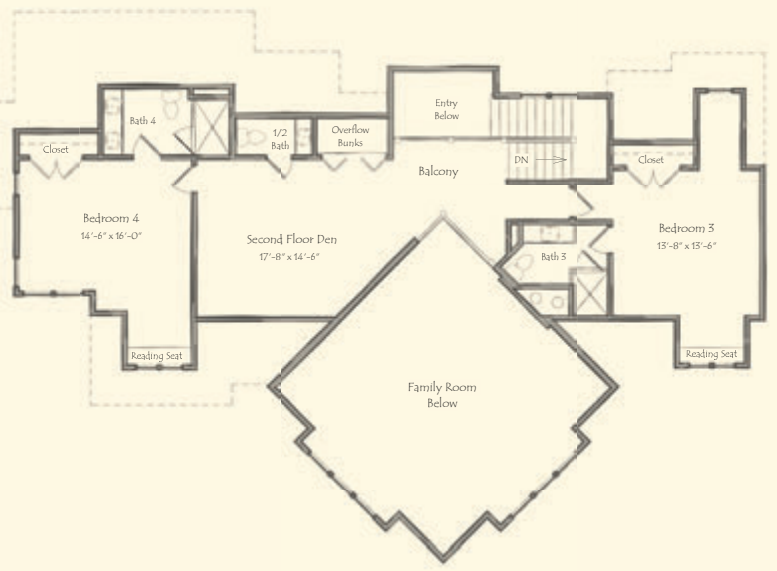
PRICE: Pricing will depend on final features and lot selection.

For additional information about Russell Lands On Lake Martin neighborhoods, call 256.215.7011 or visit [www.RussellLandsOnLakeMartin.com](http://www.RussellLandsOnLakeMartin.com).

# Main Level

CAMBRIA

2,404 Heated Sq. Ft.



# Upper Level

CAMBRIA

1,193 Heated Sq. Ft.



# INSPIRATION HOME



*Lakeside Elevation*

- Architect: Scott Torode
- Four bedrooms, optional fifth bedroom and four and one-half bathrooms
- Open kitchen-dining-living with pantry, bar, mudroom and grilling porch
- Large screened porch with stone fireplace offering beautiful lake views leading to lakeside terrace
- Primary suite with private vestibule off entry on main level
- Breezeway to double garage with optional bunkroom suite above
- Upper level offers three guest suites and second living
- 3,534 sq. ft. conditioned space; optional garage suite



*Street Side Elevation*

PRICE: Pricing will depend on final features and lot selection.

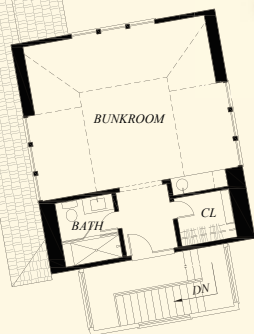
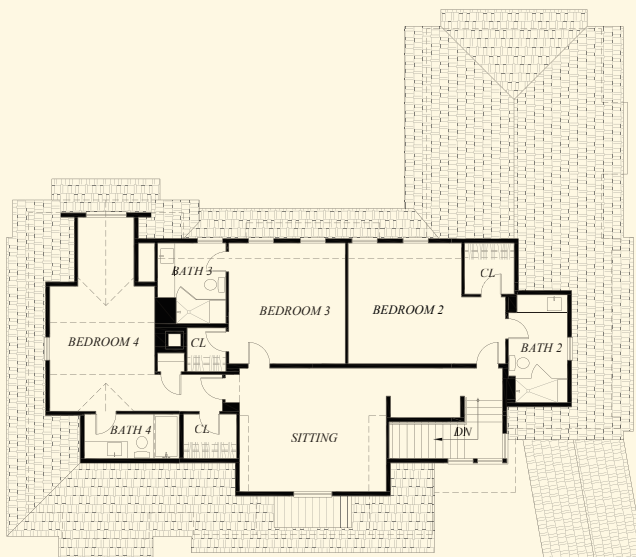
For additional information about Russell Lands On Lake Martin neighborhoods, call 256.215.7011 or visit [www.RussellLandsOnLakeMartin.com](http://www.RussellLandsOnLakeMartin.com).



*Main Level*

INSPIRATION HOME

2,053 Heated Sq. Ft.



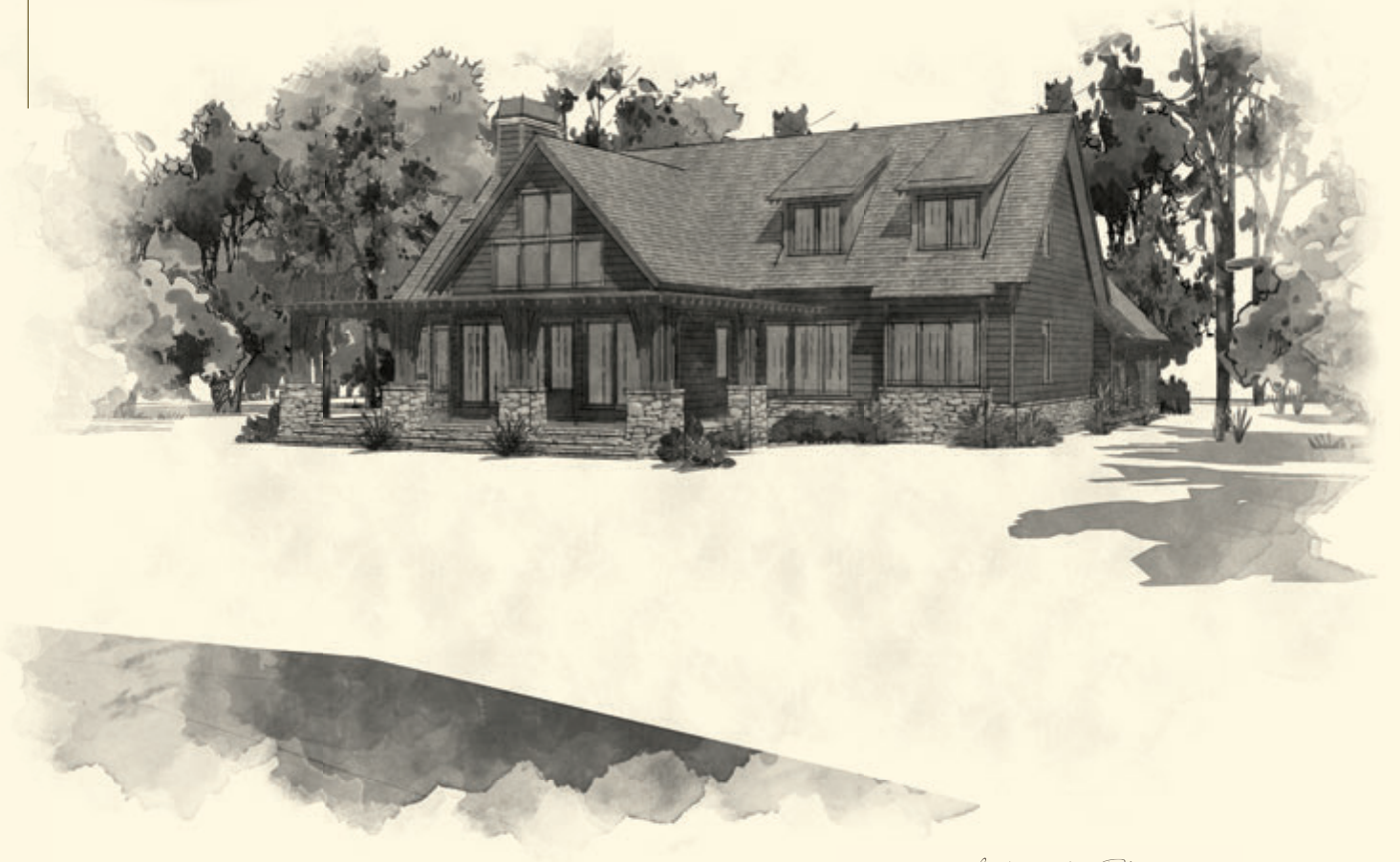
*Upper Level*

INSPIRATION HOME

1,482 Heated Sq. Ft.



# LOGAN'S RUN



*Lakeside Elevation*

- Designer: Larry Furlong
- Four bedrooms, optional fifth bedroom suite and four and one-half bathrooms
- Main level includes vaulted entry and living with two-story stone fireplace and grand wrap-around porch.
- Stunning primary and guest suites on main with dining, fully equipped kitchen, pantry and bar
- Upper level offers two bedroom suites and an optional bedroom suite, balcony and play area
- Service porch connects double garage for easy access; optional garage suite: 280 sq. ft.
- 2,634 sq. ft. conditioned space



*Street Side Elevation*

PRICE: Pricing will depend on final features and lot selection.

For additional information about Russell Lands On Lake Martin neighborhoods, call 256.215.7011 or visit [www.RussellLandsOnLakeMartin.com](http://www.RussellLandsOnLakeMartin.com).

# Main Level

## LOGAN'S RUN

1,889 Heated Sq. Ft.



# Upper Level

## LOGAN'S RUN

745 Heated Sq. Ft.





# SOMERSET



*Lakeside Elevation*

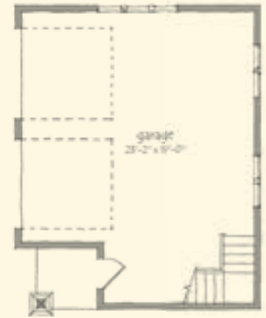
- Designer: Larry Furlong
- Four bedrooms and four full and two half bathrooms
- Open kitchen-dining-living with stone fireplace and beautiful lake views
- Large covered porch and adjoining screened porch on main level
- Lake level covered porches offer multiple spaces for entertaining family and friends
- Main level includes primary and guest suites
- Lower level offers two bedroom suites, a bunk stack area, second living and laundry, and lake prep area
- Breezeway leads to double garage and optional bedroom suite
- 3,610 sq. ft. of conditioned space; optional garage suite: 312 sq. ft.



*Street Side Elevation*

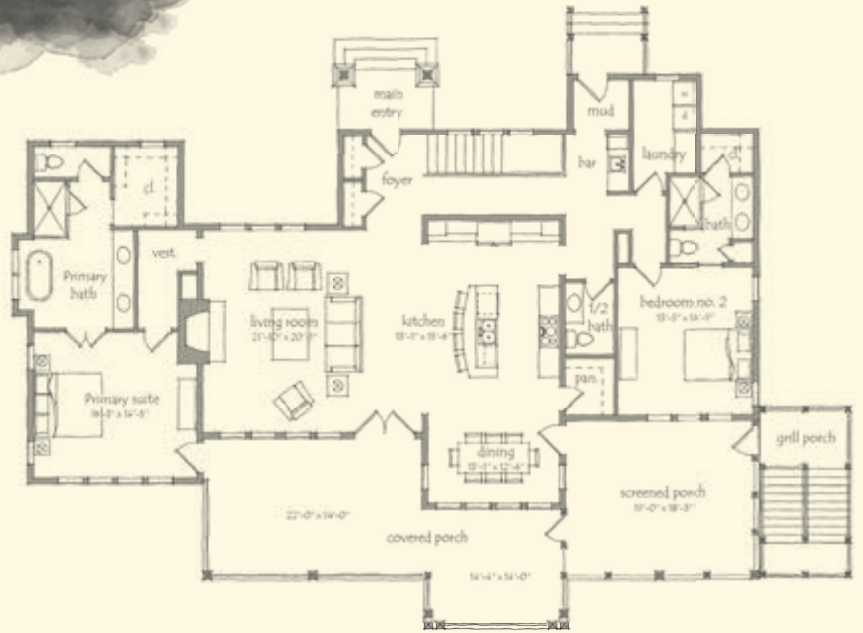
PRICE: Pricing will depend on final features and lot selection.

For additional information about Russell Lands On Lake Martin neighborhoods, call 256.215.7011 or visit [www.RussellLandsOnLakeMartin.com](http://www.RussellLandsOnLakeMartin.com).



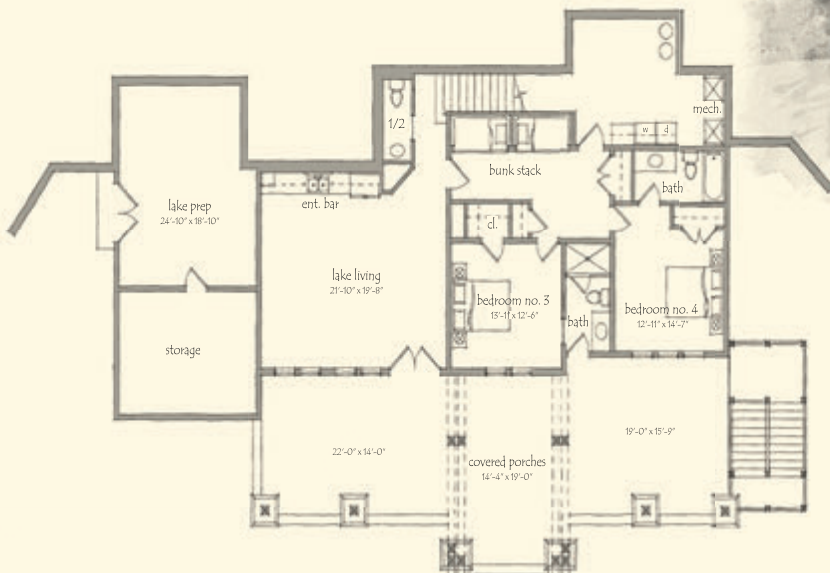
## Main Level

**SOMERSET**  
2,292 Heated Sq. Ft.



## Lake Level

**SOMERSET**  
1,318 Heated Sq. Ft.





# Y KNOT



*Lakeside Elevation*

- Designer: Bill Farshee
- Five bedroom suites and five full and two half bathrooms
- Expansive open kitchen-dining-living with built-in banquette and entertainment bar
- Massive wrap-around porches with outdoor fireplace perfect for relaxing or entertaining
- Primary and guest suites on main level
- Upper level contains two guest suites and loft that overlooks living below
- Double garage and fifth bedroom suite complete this perfect large family plan
- 3,838 sq. ft. of conditioned space; garage suite: 427 sq. ft.



*Street Side Elevation*

PRICE: Pricing will depend on final features and lot selection.

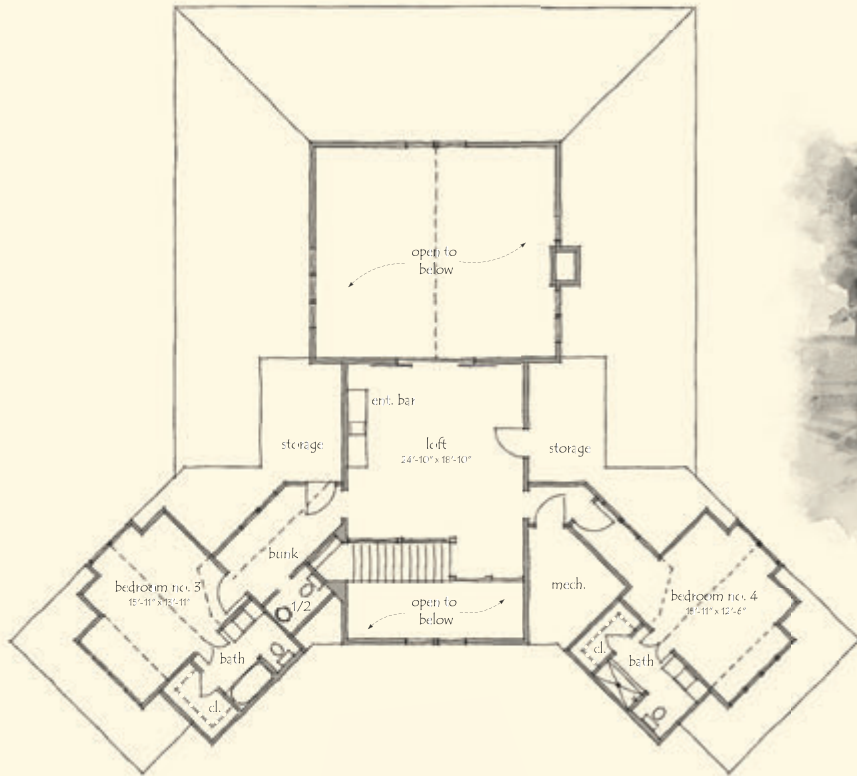
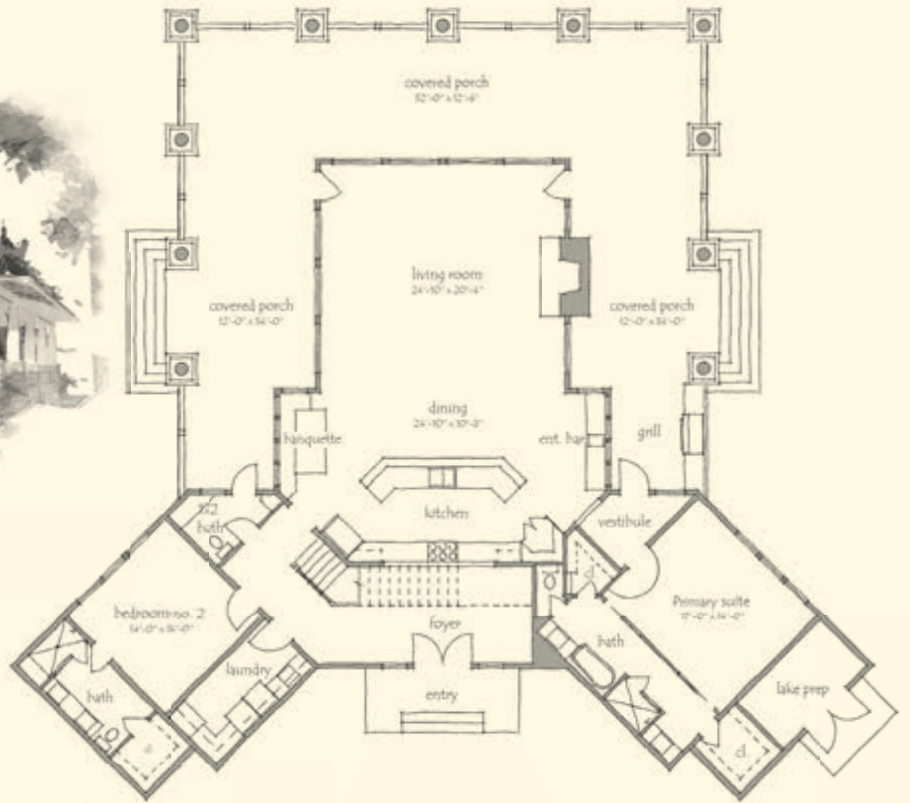
For additional information about Russell Lands On Lake Martin neighborhoods, call 256.215.7011 or visit [www.RussellLandsOnLakeMartin.com](http://www.RussellLandsOnLakeMartin.com).



## Main Level

Y KNOT

2,597 Heated Sq. Ft.



## Upper Level

Y KNOT

1,241 Heated Sq. Ft.

## Garage Bedroom

Y KNOT

427 Heated Sq. Ft.



## Garage

Y KNOT

630 Sq. Ft.

