

# LOGAN'S RUN



*Lakeside Elevation*

- Designer: Larry Furlong
- Four bedrooms, optional fifth bedroom suite and four and one-half bathrooms
- Main level includes vaulted entry and living with two-story stone fireplace and grand wrap-around porch.
- Stunning primary and guest suites on main with dining, fully equipped kitchen, pantry and bar
- Upper level offers two bedroom suites and an optional bedroom suite, balcony and play area
- Service porch connects double garage for easy access; optional garage suite: 280 sq. ft.
- Upper level offers three guest suites and rec room
- 2,634 sq. ft. conditioned space



*Street Side Elevation*

Price: Pricing will depend on final features and lot selection.

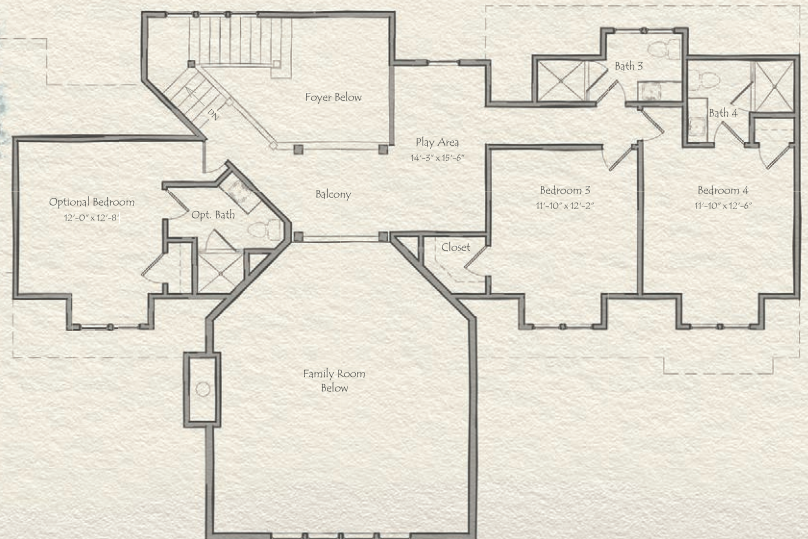
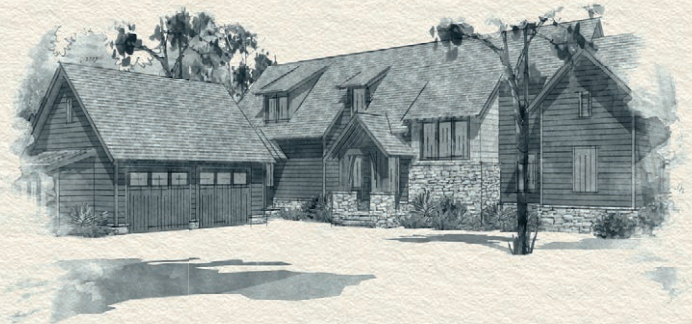
For additional information about Russell Lands neighborhoods,

*call* 256.215.7011 or *visit* [RussellLands.com](http://RussellLands.com).

*Main Level*

**LOGAN'S RUN**

1,889 Heated Sq. Ft.



*Upper Level*

**LOGAN'S RUN**

745 Heated Sq. Ft.